



## Management Services Poised for Growth and Success at Suidae

### What are Management Services at Suidae?

- Suidae offers all aspects of production management services ranging from conception to marketing. Full service on sow farm management includes human resources, production records, on-farm visits by experienced sow production specialists, accounting services, and product and supply procurement. Grow-finish management services include grading pigs at placement, regular farm visits by an experienced production supervisor, accounting services, production records, and marketing services.
- Currently managing farms across the Midwest, Suidae works with a variety of production systems allowing for a vast array of experience in both sow and grow-finish management. Some examples of this variety include management of positive and negative pressure ventilated farms, filtered and non-filtered farms, multiplication and commercial flows, Prop 12 production, electronic sow feeding, crated and pen gestation, as well as barn remodels and new construction.

### Recent growth/success

- 1 Surviving 2023 for many producers resulted in a new resolve to look hard at their operations and take additional steps to improve efficiency and lower costs. In many cases Suidae was one of the beneficiaries of these changes as evidenced by our managed farm growth in 2024. In addition to the new growth, Suidae has been blessed with numerous clients with whom we have developed trusted, long-standing relationships. Being able to interact with good people on a daily basis is part of what makes managing farms fulfilling, even when challenges come about.
- 2 One of the draws to working with Suidae is our ability to manage farms in a customized fashion to meet the specific needs of our clients. We recognize that not all farms and operations are the same and approaching them as such is not what is best for each individual entity. Some of our owners wish to be involved at a high level while others choose not to. Some have prior relationships with vendors or consultants that are important to them to maintain. In each of these situations we work to accommodate the desires of the owner group in a way that makes them most comfortable. With this arrangement our management team gets to know the owners of all the farms and develops a direct relationship with them which we feel is important to our success.
- 3 We are always looking out ahead in anticipation of bringing on new farms and ensuring we have the resources in place in order to do so. To support our current and anticipated growth, Suidae has invested in hiring a 5th sow production supervisor that will be based out of eastern Iowa, as well as a full-time Director of Management Services. In addition, our Farm Employment Services team is fully staffed and we are able to tap into that when a new farm starts up or if the event staffing turnover occurs. Having the resources and talent in place to be able to absorb growth across multiple geographic locations is important to our business and something that we remain committed to.

### Algona Office

2111 100th Ave. | Algona, IA 50511  
Office: 515-295-8777  
Fax: 515-295-4954

### Morris Office

621 Pacific Ave | Morris, MN 56267  
Office: 320-589-0111  
Fax: 320-589-9096

### Lake City Office

1103 W. Main St. | Lake City, IA 51449  
Office: 712-464-8911  
Fax: 712-464-8016

### Hours

Monday–Friday 8am–5pm

### Veterinarians

Dr. Matt Anderson  
Dr. Todd Distad  
Dr. Jason Kelly  
Dr. Amber Stricker  
Dr. Trevor Schwartz  
Dr. Brandi Burton  
Dr. Chris Deegan  
Dr. Matt Finch  
Dr. Amanda Anderson Reeever  
Dr. Brent Sexton  
Dr. Mitch Christensen

### Our Philosophy

*To provide our clients with the highest professional service. To achieve this we invest in our employees and instill in each of them a strong sense of customer service and commitment. We believe this personal relationship allows us to work with our clients to the best of our abilities, and is the foundation of Suidae Health and Production.*

# Meet SHP's New Director of Management Services – *Dr. Mitch Christensen*



If you grow up in rural Iowa there is always a chance that pig production will find you. That is at least how it felt to Dr. Mitch Christensen. In high school it seemed every part-time job led to a pig barn. It started with power washing, loading market hogs, and vaccinating wean pigs. Then it was a summer job choring wean to finish research barns and working a few days a week on a sow farm. It was at one of these jobs during his college summer breaks that resulted in crossing paths with the veterinarians from Suidae Health and Production. Interacting with the Suidae veterinarians is what inspired Dr. Mitch to pursue a career as a swine veterinarian.

Dr. Christensen received his DVM from Iowa State University in 2008. After graduation, Dr. Christensen spent the first four years of his career working in private practice as a swine consulting veterinarian and one year working with a large swine production system in Iowa. He then landed a role working at a global swine genetics company, Topigs

Norsvin. During his ten and half years in the genetics business he served in various areas of the business from overseeing health and biosecurity, leading multiplication development and leading a production services team. For the three years prior to joining Suidae, Dr. Christensen served as the Chief Veterinary Officer (CVO) for Topigs Norsvin International. In this role, he was responsible for building and leading the Global Veterinary Services team.

*As the new Director of Management Services his role will be to provide vision, leadership and oversight to the management segment of the Suidae business which includes sow farm and grow finish management to customers across the upper Midwest.*

## Have you enrolled and certified with US SHIP?



The aim of the United States Swine Health Improvement Plan (US SHIP) is to establish a plan that enhances the prevention, response, and recovery of trade impacting diseases such as African Swine Fever. This plan will prepare pork producers and packers, so they have a pathway to continuing normal day-to-day business operations in the event of a foreign animal disease outbreak.

All sites need to be enrolled and certified for US SHIP participation. Enrollment is as simple as contacting your Official State Agency and filling out some surveys. Certification is electronic documentation of 30 days of movement information. As of summer 2024, 36 states are participating in the program. 73% of the US breeding herd, 63% of growing pig inventory. Suidae feels it is very important for all producers to get certified, and we are here to help. Contact a Suidae veterinarian today if you need help getting enrolled and certified with US SHIP. More detailed information can be found at <https://usswinehealthimprovementplan.com/>.

# Ensuring Judicious Use of Water Medication

We all have a part to play in ensuring the judicious use of water medications. These treatments are effective tools to protect the health and wellbeing of the pigs in our care. “Judicious” is a term that gets throw around a lot and may mean different things to different people. It is important to understand that “Judicious” medication use does not necessarily mean “Less” medication. It means the “Right” drugs are used for the right reasons. Your Suida veterinarian is here to help make sure we run the “right” medications.



- Dr. Sexton



## Here are 6 tips to ensure judicious medication use and improving the efficacy of our treatments:

01

**Communicate.** If there is an issue, we need to know about it. Water medications are not the solution to every problem, but we cannot make appropriate recommendations if we aren't kept up to date with how the pigs are doing.

02

**Use the right mixing rate.** Even the same medication may come in different packages with different volumes or concentrations. Make sure you know what rate to mix the medication at and don't hesitate to ask your veterinarian if you have any questions.

03

**Run it for the right duration.** If we run out or cut the pulse short, we may not effectively treat the animals and encourage antibiotic resistance. Additionally, running a medication for too long can cause negative effects for the pig, alter withdrawal times, and again encourage antibiotic resistance.

04

**Only mix 12-24 hours of medication at a time.** After mixing a medication, the bioavailability (what is available for the animal to absorb) starts to drop. Mixing multiple days at once can lead to increased settling and less effective treatments.

05

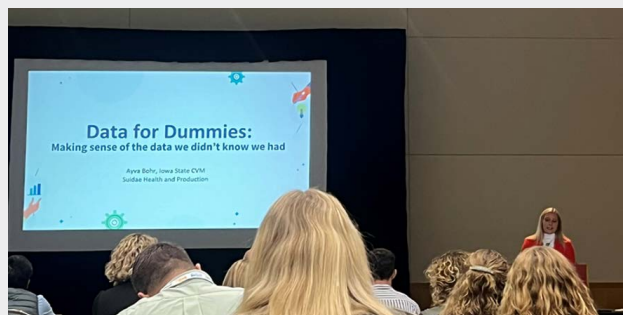
**Watch the stock solution.** Every time a medicator is running, we need to monitor and ensure it is working correctly. Evaluating how much stock solution is used and how that compares to water usage allows us to ensure the pigs are receiving the right amount of medication.

06

**Avoid waste.** Leaky water nipples can lead to hundreds or thousands of gallons of water being wasted and if the water is medicated, then the medication is wasted too. Ensure leaky nipples are fixed to avoid extra pit pumping costs and wasting medications.

# Suidae Innovative Research

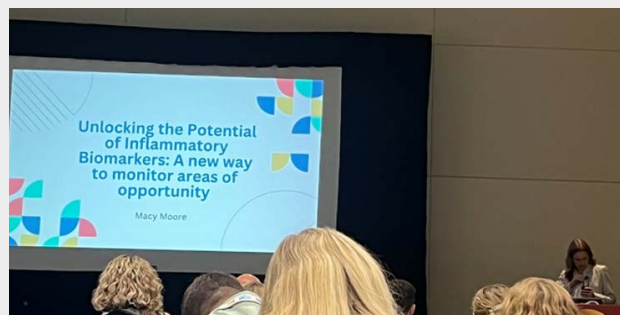
Our summer veterinary student interns, Ayva Bohr and Macy Moore, were both finalists for the Morrison Swine Innovator Prize at the 2024 Allen D. Leman Swine Conference. Ayva and Macy each presented the projects that they completed during their time at Suidae Health & Production. We're excited to share some highlights from their projects and want to congratulate both Ayva and Macy on a job well done!



## Data for Dummies: Making sense of the data we didn't know we had

### Ayva Bohr

For her presentation, Ayva gave an innovative demonstration on data exports and excel tricks that producers and veterinarians can use to make data-driven decisions without collecting any new information at all. Most producers use a production record management software, but may only look at a small weekly summary of the data to make decisions. In some instances, certain pieces of data never make it out of the database and into a summary at all. This poses the question: What are we missing? How can this data be used to its full potential? The objective of her presentation was to open the door for veterinarians and producers to more effectively explore and utilize existing data, thereby enhancing decision-making processes and improving overall operational efficiency. As an example, Ayva exported data from 5 independent sow farms that included individual sow farrowing metrics and employee actions. She shared her finding that across all 5 farms there was an increase in average stillborns per litter as farrowing duration time increased. With this information, decisions can be tailored to the individual farm for the best time to intervene during the farrowing process. There are endless other ways to evaluate specific employee compliance, identify high-risk animals, and detect areas of opportunity with new or improved procedures using data we already have or could easily have at our fingertips.



## Inflammation: Past – Present – Future

### Macy Moore

Macy's presentation highlighted an innovative new way to gauge inflammatory status on pig farms. She shared how inflammation has negative implications on the performance of growing pigs and can have a sizable impact on profitability. Serum vitamin A levels can be utilized as a biomarker to quantify inflammation, which correlates with finishing performance. The objectives of her study were to understand if the biomarker average and variation could be correlated to farm PRRSV status and to investigate the necessary sample size for biomarker testing. Farms with varying PRRSV status and prevalence were enrolled and piglets were bled prior to weaning. Macy found that the inflammatory statuses of the farms were significantly different from each other; however, levels did not appear to be correlated with PRRSV status or production parameters such as pigs weaned per sow per year. This indicates that a universal recommended biomarker threshold cannot be established, but rather farms can use this tool for evaluating the impact of an intervention on inflammation in their herd. She also determined that a randomized sample of 6 full litters of piglets was sufficient to draw conclusions compared to a previously larger recommended sample size. Biomarker testing is an innovative, new way to gauge the success of specific interventions and veterinarians can use this method for efficient and cost-effective evaluation of inflammatory status on the farms they work with.

# Employee Spotlight

## Meet Ryan Schleis

Ryan was born and raised in Harlan, IA. He got into the pig industry in 2005 when he started working on a sow farm. In 2009, Ryan made a move to Audubon, IA and began working at a Suida managed farm in the area. Another move in 2018 re-located Ryan to Parkers Prairie, MN where he became a sow farm manager at another Suida managed farm. In 2021, Ryan started working for Suida as a sow farm production supervisor. In his role as a production supervisor, Ryan oversees the production of several sow farms in Minnesota and North Dakota.

Ryan met his wife, Kacie, in 2008 and they were married in 2011. They have 3 children – a 14-year-old son (Bowen), an 11-year-old daughter (Laila), and a 3-year-old son (Reid). Kacie is a traveling surgical technician. Bowen plays football, track, and does speech. Laila loves doing crafts, painting, and anything with artwork. Reid is in pre-school and loves whatever his older siblings do. Ryan and his family live on an acreage near Parkers Prairie where they also have 2 cats and 2 English mastiffs. In their free time, the family likes to go hiking, take road trips, attend sporting events, and work on their acreage.



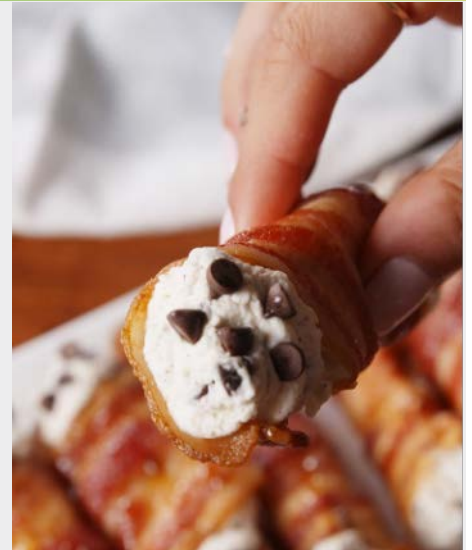
## PORK RECIPE

### Bacon Cannoli

Yes, you read that right – a bacon cannoli! Ditch the complicated pastry dough for bacon in this desert with a twist that leave your holiday guests impressed.

#### Ingredients:

- 10 slices of bacon
- 2 cups heavy cream
- 1/3 cup powdered sugar
- 1 teaspoon cinnamon
- pinch of nutmeg
- 1 cup ricotta
- 2 cup mini chocolate chips, divided



#### Directions:

1. Preheat oven to 400° and line a large rimmed baking sheet with foil.
2. Make a cylinder out of aluminum foil and wrap slices of bacon around it to create your cannoli shells. Bake until bacon is crispy, 18 to 20 minutes. Remove from the oven and let cool slightly.
3. In a large bowl using a handheld mixer, beat together heavy cream, powdered sugar, cinnamon and nutmeg until stiff peaks form. Using a spatula, fold in ricotta and 1 cup chocolate chips. Transfer to a piping bag.
4. Pipe ricotta mixture into bacon and garnish with more chocolate chips.
5. Enjoy this sweet and savory treat!

Recipe source: [www.delish.com/cooking/recipe-ideas/recipes/a54545/bacon-cannoli-recipe/](http://www.delish.com/cooking/recipe-ideas/recipes/a54545/bacon-cannoli-recipe/)